

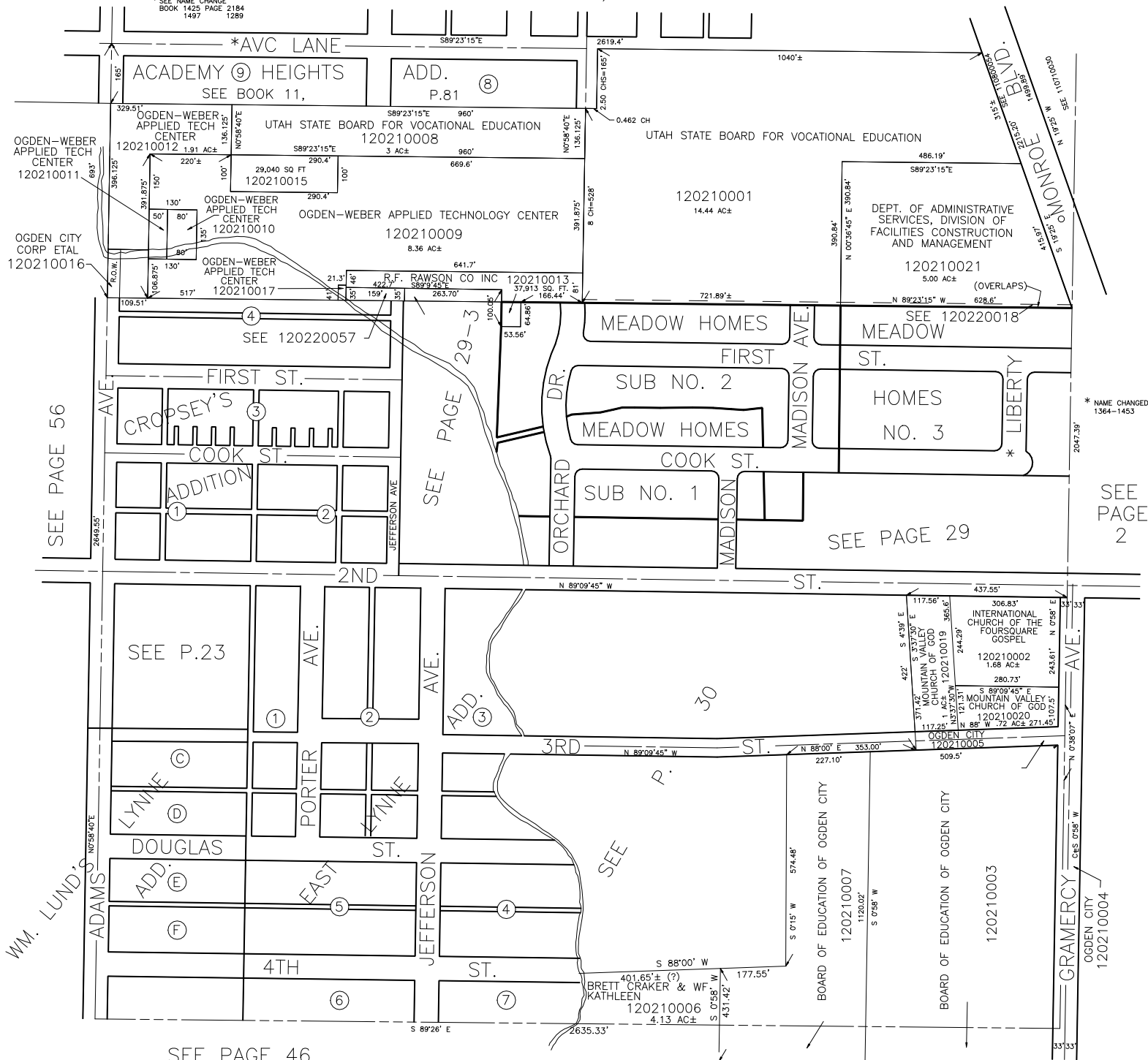
IN OGDEN CITY
SCALE 1" = 200'

TAXING UNIT: 25

SEE BOOK 11, PAGE 80

○ NAME CHANGED 12/15/77

*SEE NAME CHANGE
BOOK 1425 PAGE 2184
1497 1289



SEE PAGE 46

SEE PAGE 44

CB 5-97